



PRAGATHI STUDIO

DESIGN CONSULTANCY | PROJECT MANAGEMENT | TURNKEY SOLUTION

www.pragathistudio.com

COMPANY PROFILE

CRAFTING A BETTER FUTURE

Design consultancy – Projects Management – Turnkey Solutions

Bengaluru, India

+91 9686527003

info@pragathistudio.com

P R O L O G U E

8+

**YEARS OF EXPERIENCE
IN THE INDUSTRY**

TRANSFORMING SPACES WITH SUSTAINABLE DESIGN SOLUTIONS

Founded in September 2017, we are a team of enthusiastic and committed engineers & Architects dedicated to delivering high-quality work and meeting deadlines in the interior fitout industry across various sectors. Our core strength and strategic approach have garnered us recognition and built lasting trust with every client we've worked with.

Supported by a passionate team of designers and project managers, we approach each project with a commitment to excellence and a vision for a more sustainable and prosperous future.

A B O U T U S

PRAGATHI & STUDIO AELUX -

How It All Began

With over two decades of experience in project management, we identified a recurring challenge in the industry: a lack of dependable contracting firms that could consistently deliver high-quality work on schedule. This gap often left projects delayed or below expected standards.

We successfully completed the project with both precision and punctuality, earning strong appreciation from clients and mentors alike. Since then, we have remained committed to quality, timely delivery, and client satisfaction. Our dedication has helped us build a solid reputation for executing complex projects efficiently, expand our client base, and maintain long-standing relationships that continue to generate repeat and ongoing work.

In parallel, we collaborated with **Studio Aelux**, an architectural firm with over 8+ years of experience. Their multifaceted approach and innovative design ideas have been instrumental in shaping our projects. Together, we have successfully executed numerous projects, consistently delivering excellence in both design and execution.



MEET THE FOUNDERS

M. SAMEEULLAH | DIRECTOR

With over two decades of experience in managing corporate interior projects, I am highly enthusiastic and passionate about my work. I have successfully led and delivered projects spanning over 2 million square feet PAN India.



ADARSH Y.C | DIRECTOR

I am a young, dynamic, and self-driven individual who embarked on a career in the contracting industry at a very early age. Passionate about my work, I am well-skilled and know how to get the job done efficiently. I take pride in delivering high-quality results with a hands-on approach.



JOHN JOHN N | DIRECTOR

I have led design studios and trained designers at various levels, actively participating in all stages of projects, from conceptual planning and sketches to design development, detailing, and completion. My experience ensures every project is executed with precision & creativity.



ANGELS JAMES | ARCHITECT - URBAN DESIGNER

Architect- Urban Designer with 8+ Years Experience. Associated with Surbana Jurong, Singapore and Khatib & Alami, UAE and Kukke Architects, Bangalore, City+ Futures Collaborative, Kochi. Expertise in Master planning and Architectural Projects in International and National level. Alumnus of NIT Trichy and CEPT, Ahmedabad



P O R T F O L I O

DESIGNED TO PERFECTION

100+

**COMPLETED PROJECTS ,
COUNTLESS INSPIRATIONS**

FEATURED PROJECTS

**WE DO INTERIOR FIT OUT WORKS FOR
CORPORATE OFFICES, SPECIALIZED
INDUSTRIES IN EDUCATIONAL INSTITUTIONS,
HOSPITALS, BANKS, RESTAURANT, STORES,
RESIDENTIAL BUILDINGS.**



Our Projects

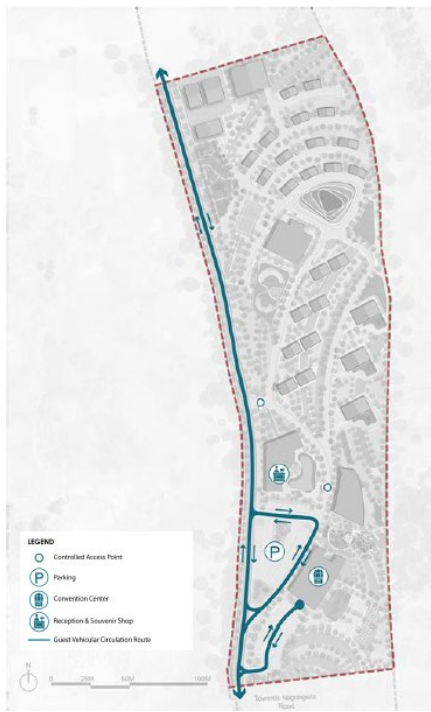
SHIRE FARM RESORT, Tororo, Uganda

SIZE : 10 Acre

Shire Farm Resort was envisioned as a sustainable boutique retreat rooted in rural rhythms—with immersive farm life, sustainable elegance, and panoramic Tororo rock views. The resort will include 25 stand-alone one-bedroom units with panoramic view towards Tororo rock. The resort will include a centralized restaurant, and a modern conference facility, all set within a 10-acre parcel of land.



5.4.1 Guest Vehicular Circulation



5.4.2 Service Vehicular Circulation



URBAN RIVERIA – Khasab

SIZE : 432 Hectare

Khasab Masterplan is the product of a vision to establish a new Integrated Tourist Destination within GCC. Khasab is envisioned to be the Arabian Riviera with an area of 432 Hectare with a new Waterfront Development for residents, business and visitors. The development envisages resorts, hotels, public spaces, residential area and mixed use facilities for 33000 visitors per year.



URBAN RIVERIA – Khasab



View of Green Connectors between Residential Development



A palette of sophisticated neutrals with strategic pops of color enhances the brand identity while maintaining a professional ambiance. Thoughtfully curated lighting, acoustic solutions, and biophilic elements create a balanced and inspiring work environment, aligning with Vontier's commitment to progress and connectivity.

Shaded Walkways and Contemporary Omani Architecture in Souq

URBAN RIVERIA – Khasab



View of Fort from Cultural Village



View from Premium Residential in West Hill overlooking Khasab Bay

OPEN SPACE STRATEGY



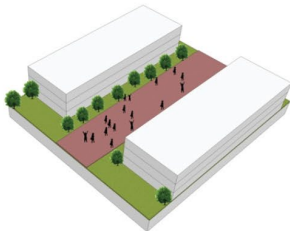
Neighborhood Green



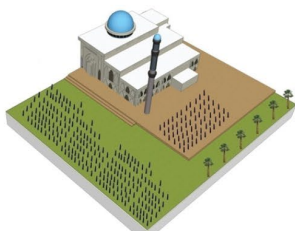
District Green



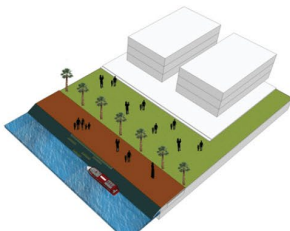
Central Green



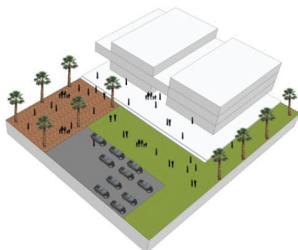
Green Connector



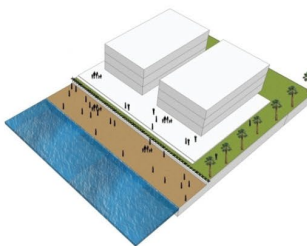
Plaza- Religious Space



Open Area near Waterfront

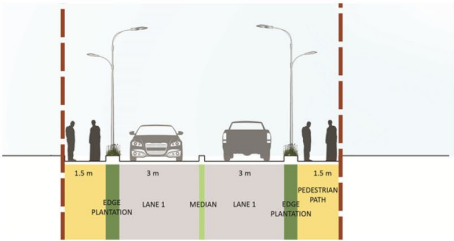


Plaza- Convention Center

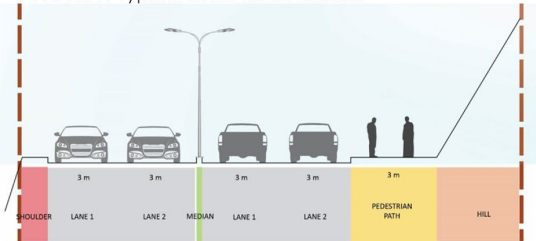


Beach Promenade

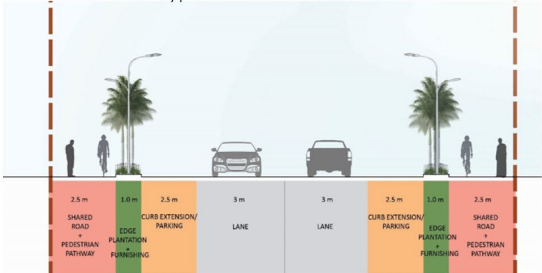
TYPICAL SECTION



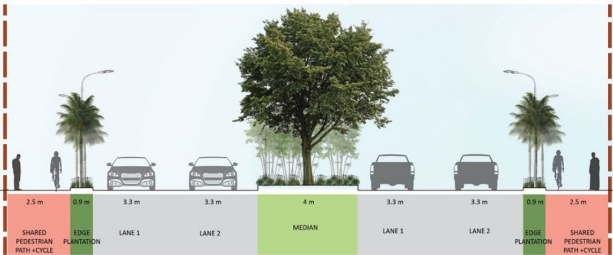
10 m ROW Typical Local Road Section



15 m ROW Typical Local Hill Road Section



18 m ROW Typical Secondary Road Section



24 m ROW Typical Primary Road Section



PRAGATHI STUDIO



STUDIO AELUX

NEOM NEIGHBOURHOOD COMMUNITY– UAE

SIZE : 181 Hectare

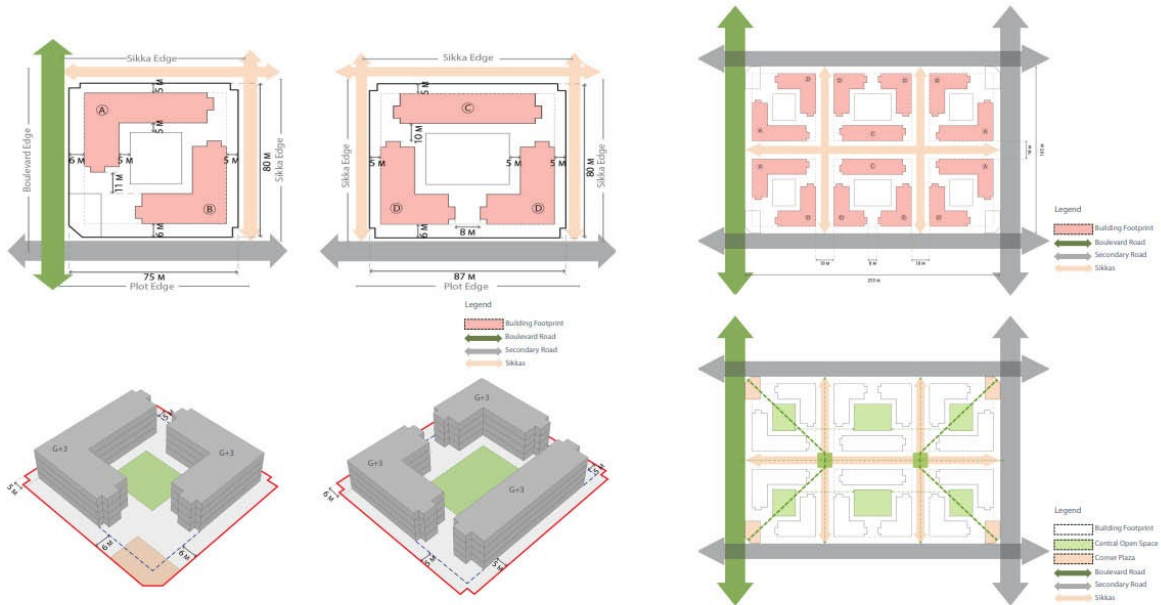
Khasab Masterplan is the product of a vision to establish a new Integrated Tourist Destination within GCC. Khasab is envisioned to be the Arabian Riviera with an area of 432 Hectare with a new Waterfront Development for residents, business and visitors. The development envisages resorts, hotels, public spaces, residential area and mixed use facilities for 33000 visitors per year.

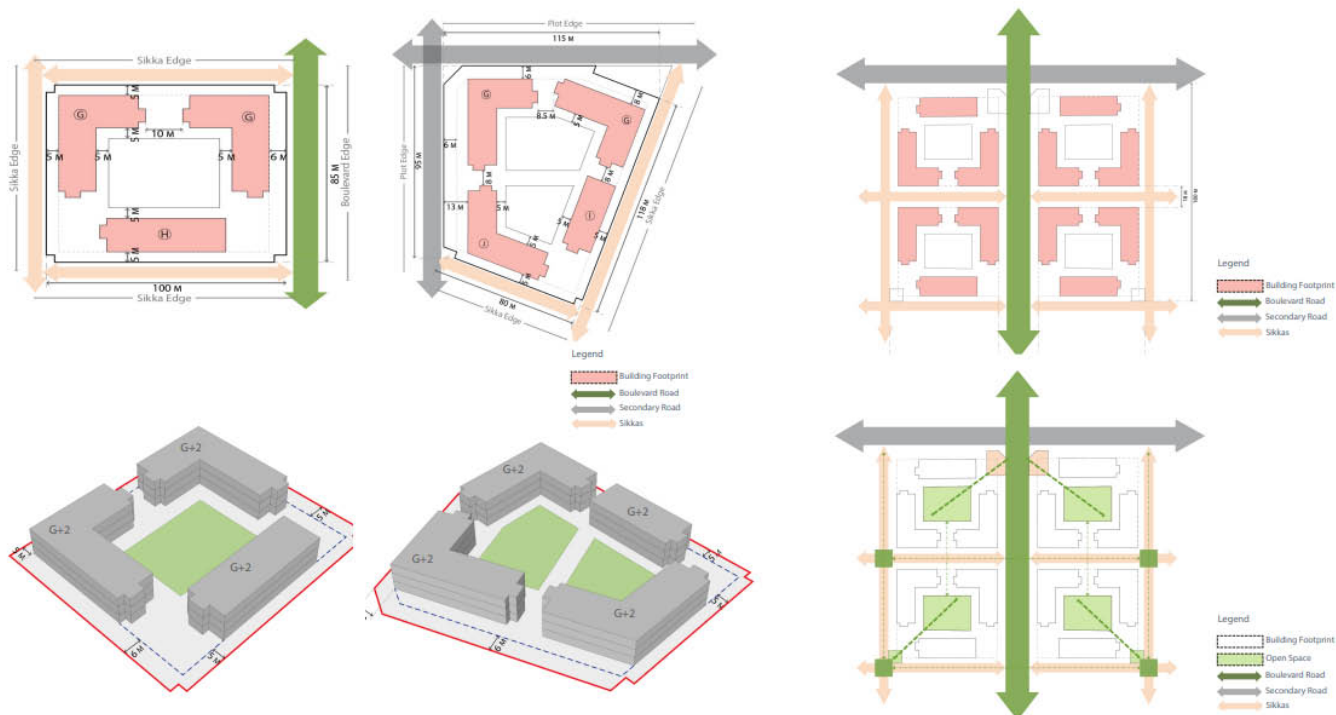


NEOM NEIGHBOURHOOD COMMUNITY- UAE



BLOCK A- CLUSTER ARRANGEMENT STRATEGY





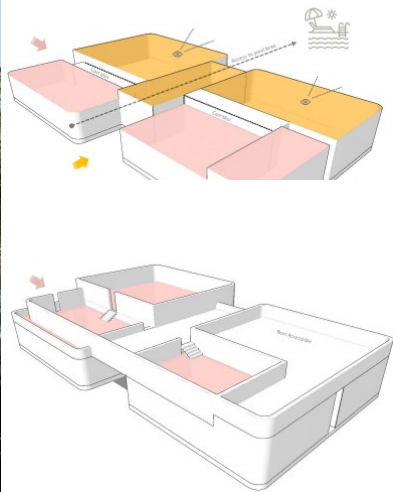
NAJMAT CLUBHOUSE – UAE

SIZE : 181 Hectare

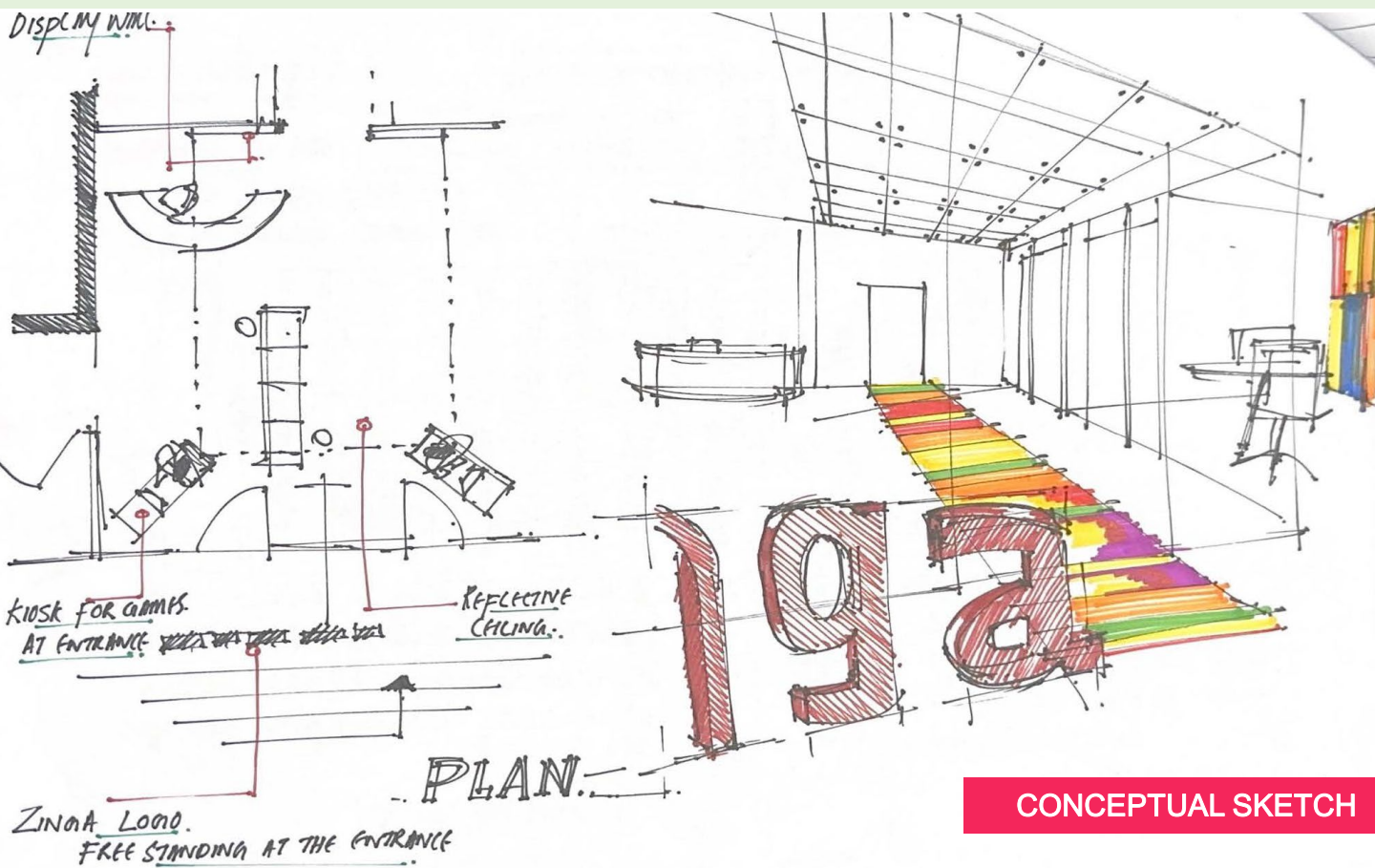
NEOM’S HIGH DENSITY COMMUNITIES -PLOT A, B & C is proposed to address the shortfall of coming years, the demand Residential Units and Offices Buildings will be increased due to the impact of the Spine on the north clusters within NC1. The proposed plan included 1600 units in Plot A, 450 units in Plot B and offices in Plot C in 30 hectares.



Massing Study

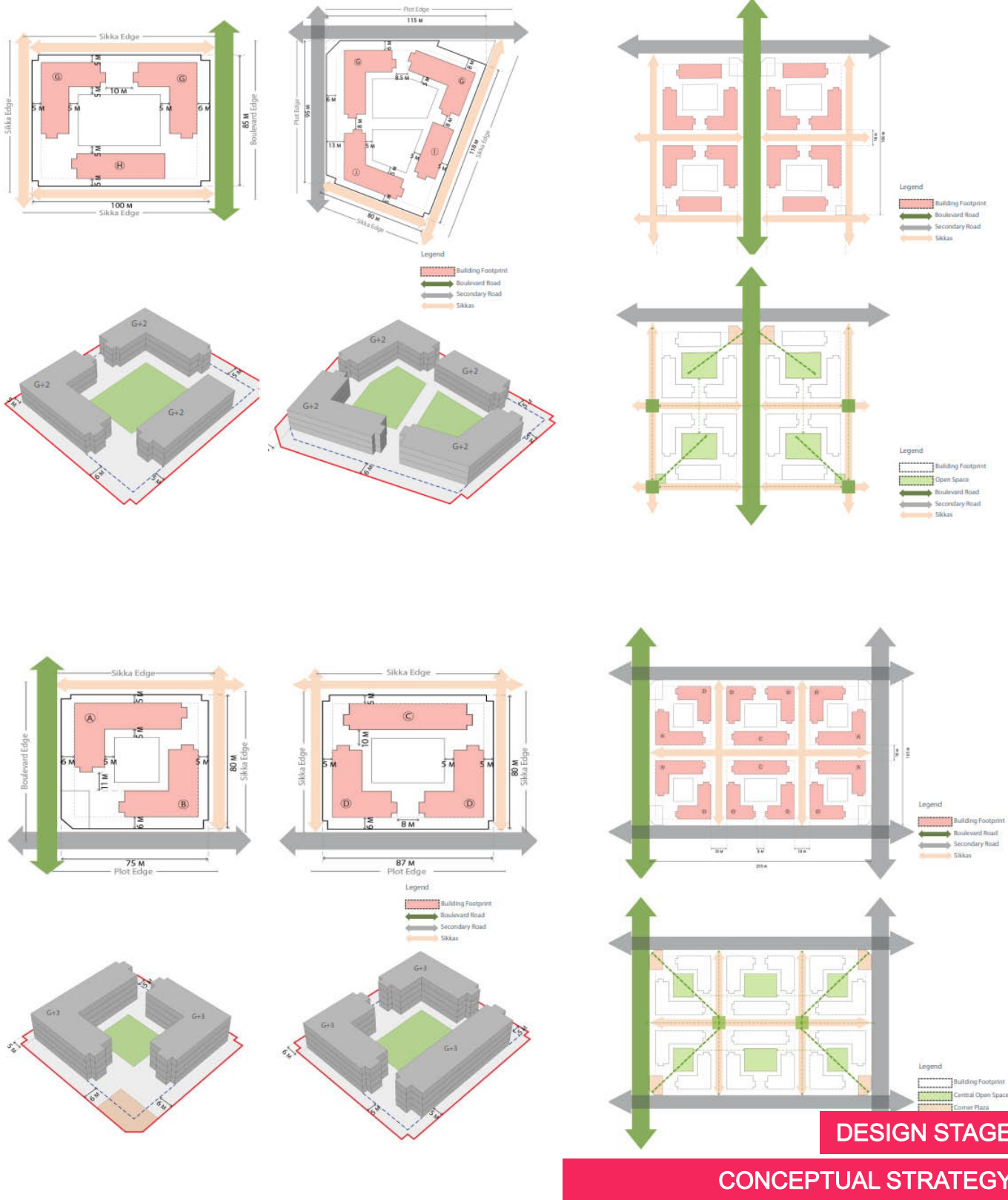


DESIGN METHODOLOGY

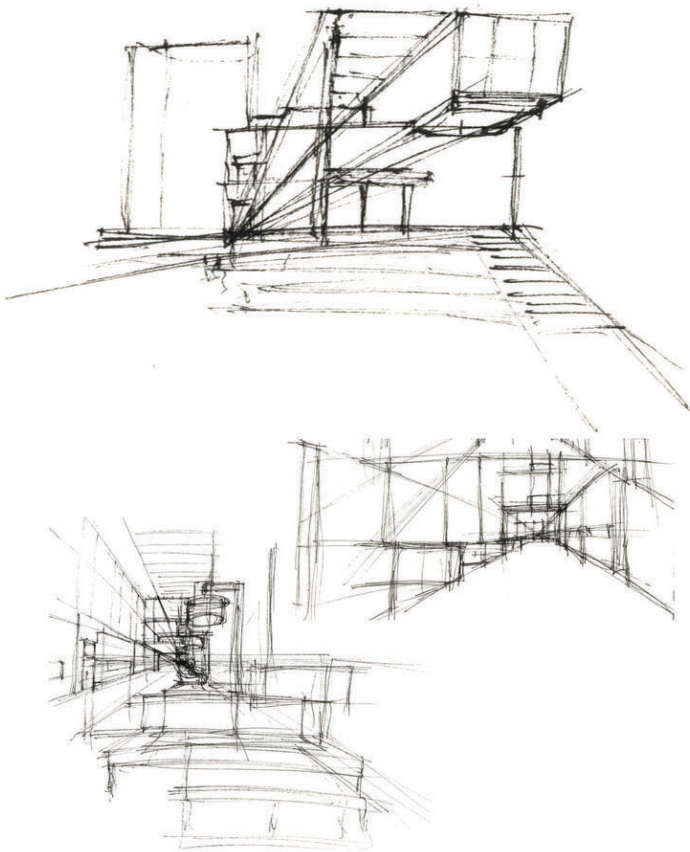
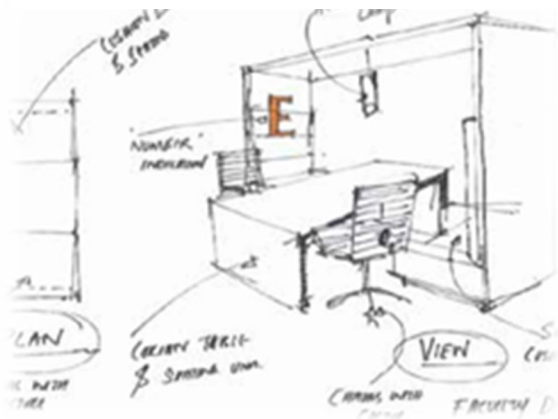
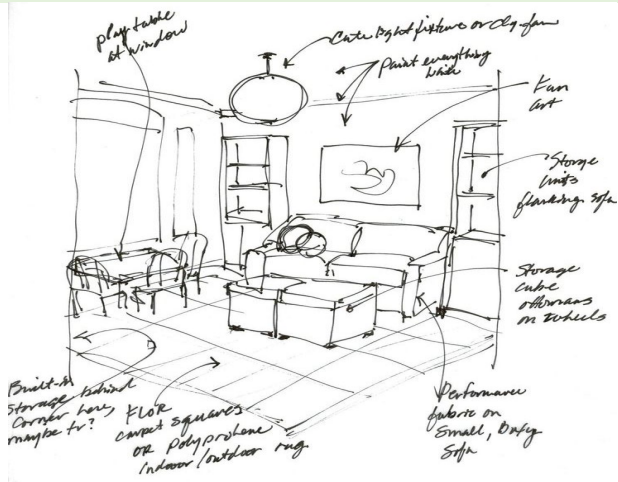


DESIGN METHODOLOGY

BLOCK B- CLUSTER ARRANGEMENT STRATEGY



Conceptual sketches to 3D Visuals





SPECIFIC PLANS AND KEY DELIVERABLES

KEY MILESTONES AND DESIGN METHODOLOGY

STAGE 1

- Site due diligence
- Survey of existing offices
- Data Gathering
- Final requirement sheet
- Micro/Macro level planning
- Stacking Diagram
- Block Diagram
- Layout plans
- Design workshop with clients and project managers

STAGE 2

- Design Thoughts
- Concept
- 3d view development

STAGE 3

- Design Documentation
- Tender drawings and documents
- Costing
- Coordination workshop with MEP and all other services consultants.
- Design Workshop with construction team prior to start of work on site.
- Good for construction drawings

STAGE 4

- Site Coordination
- Quality Audit
- As built documentation



Services – creativity, innovation and expertise

OUR SERVICES

CRAFTING DREAMS INTO REALITY

With a blend of creativity, innovation, and expertise, we transform your dreams into reality...

We turn imagination into tangible beauty. At Pragathi Projects, we understand that every space has a story waiting to be told, and our mission is to bring those narratives to life through our comprehensive range of services.

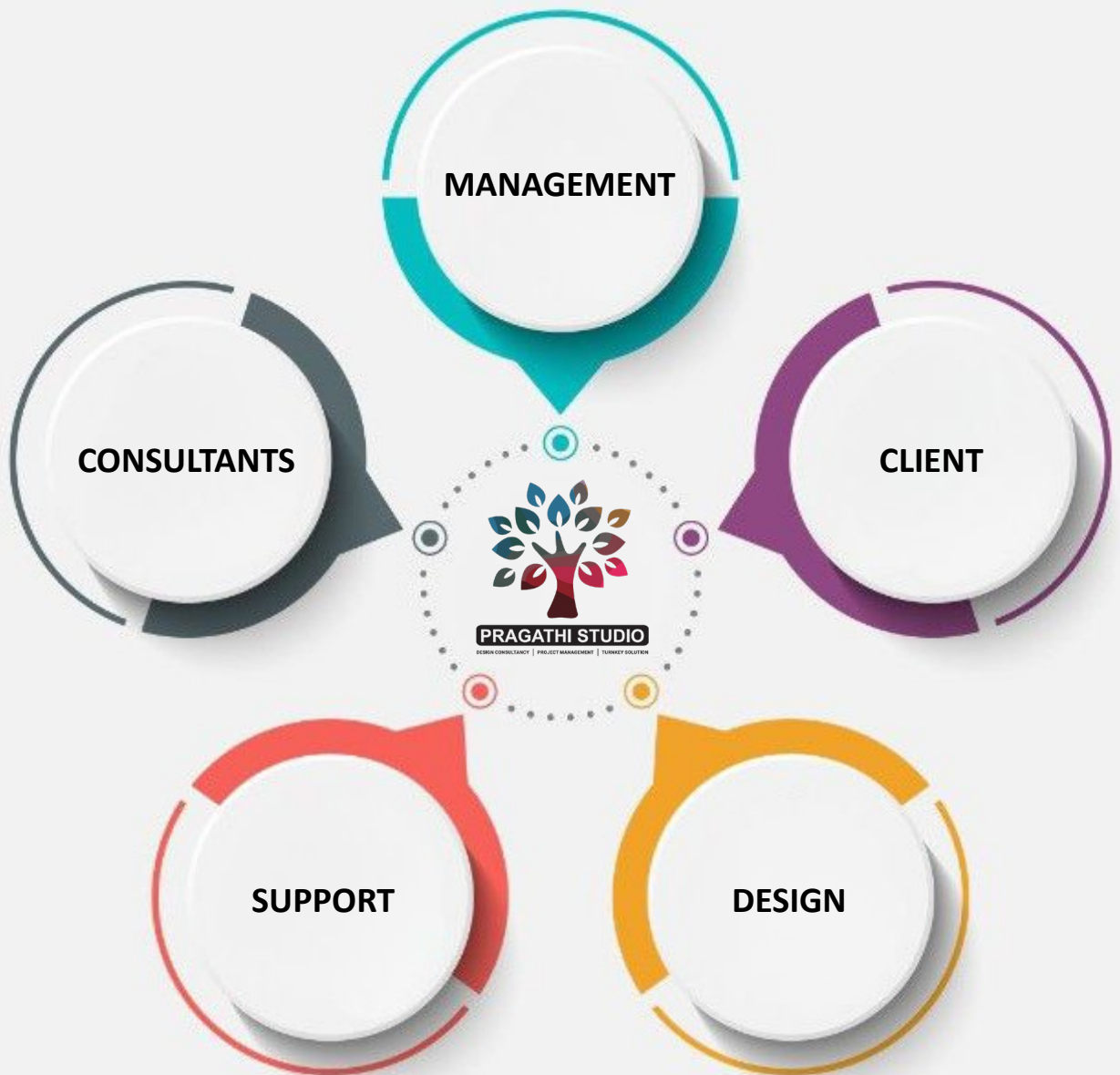
A modern building with a geometric design, featuring a large overhanging roof and glass balconies. The building is set against a blue sky with clouds. In the foreground, there is a paved area with a geometric pattern. At the bottom of the image, there is a silhouette of a city skyline.

**PROJECT
MANAGEMENT**

**TURNKEY
SOLUTIONS**

**DESIGN
CONSULTANCY**

ORGANIZATION STRUCTURE



Contact US – Say Hello!

THANK YOU

**CONTACT PRAGATHI PROJECTS TODAY FOR A
CONSULTATION ON YOUR PROJECTS.**

We're here to build ideas into reality—reach out to start the conversation or learn more about our design and construction services.

TALK TO US : +91 9686527003

SAY HELLO! :

info@pragathistudio.com
www.pragathistudio.com



Pragathi Studio
Techspace 4-th floor25 , Nehru Rd, HRBR
Layout, Kammanahalli, Bengaluru
Karnataka - 560084